

# Feet Installation

- Right Position
- About Bolts and washers
- Checking Balance

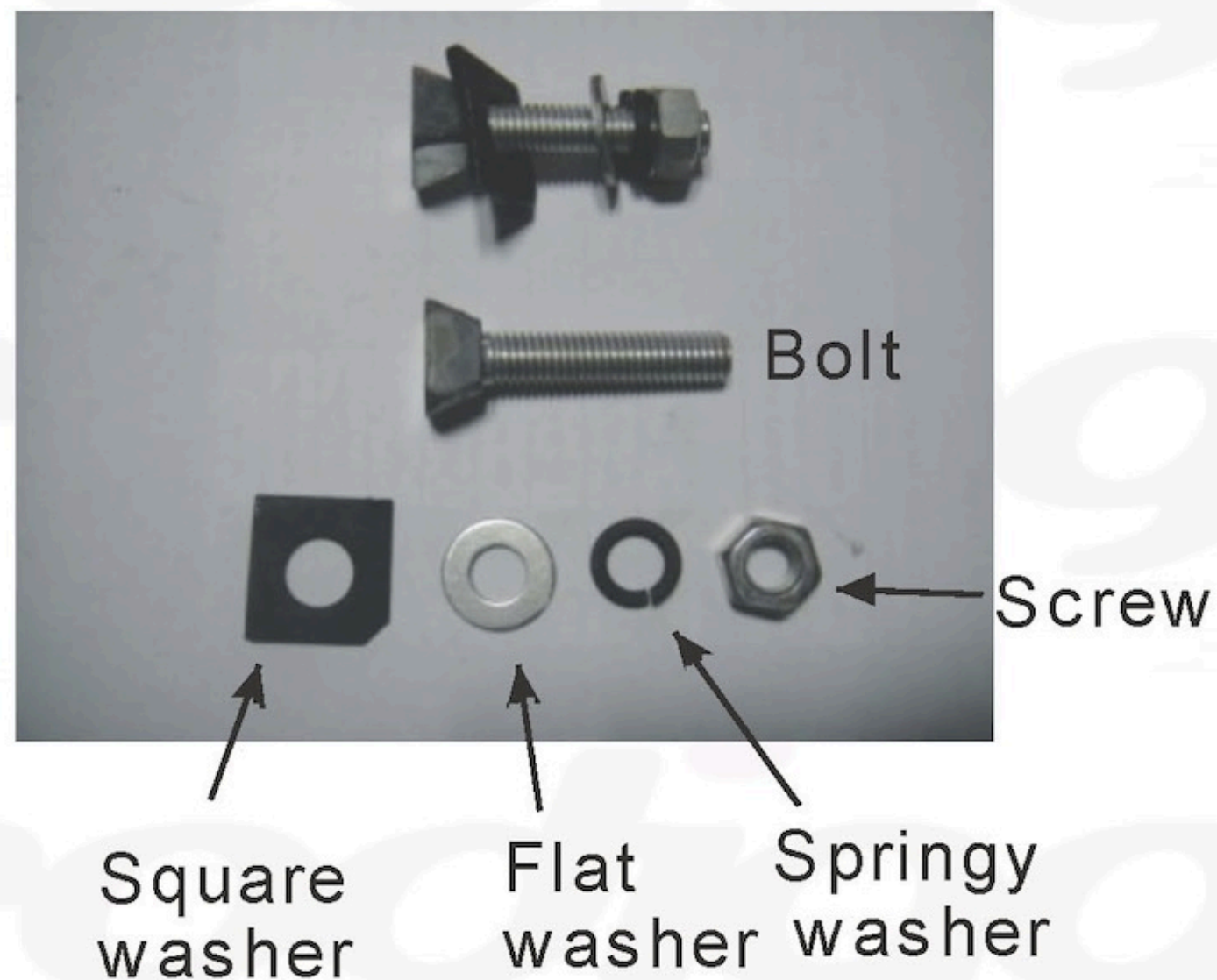
## Right Position of feet

Some tub has the completely feet. That's to say they can switch the feet freely. But for some tub(BGL-83,BGL-71-1,BGL-83, the feet is different. They must be in the right position (We mark the letters on the bracket.) Please install the feet in its right position.

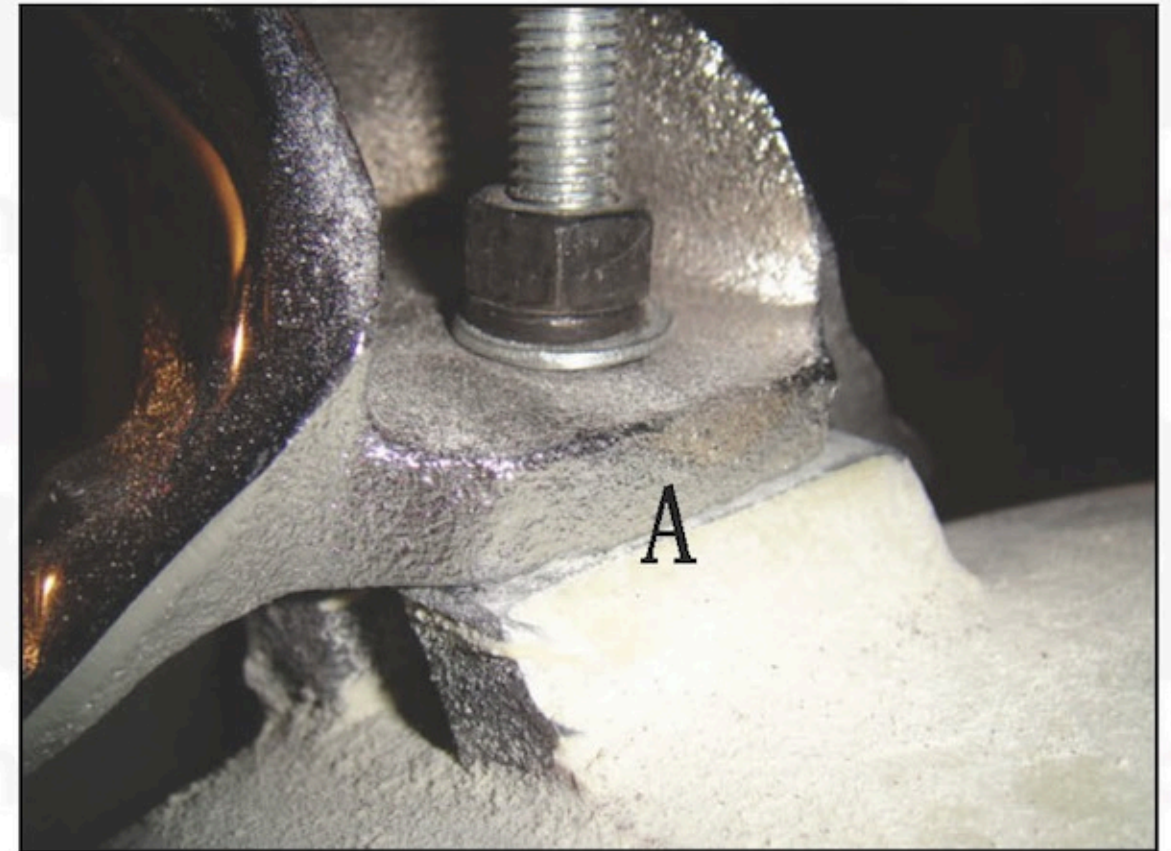
BGL-80 (Rosenheim) and BGL-89-1 have the four same feet. You can install any feet to any feet bracket.

# Bolts and washer

Please pay attention to the order of bolts and washers.  
The feet is between square washer and flat washer.







Insert the bolts into the bracket, put the feet on making the bolts into the hole, move the feet around to find the most coincide and stable position for the feet, then tighten the screw. If there is a gap between you can put the square washer in position A to





# Checking balance

- After installation, please check it's balance before turning it back with the thread. The two threads will touch if the feet installation is successful. If not, it need further adjustment.

